

# Kut - kho Tâi - gi

## Orthopedic Terms in Taiwanese

高雄醫學大學骨科  
周伯禧

## ANATOMY ( upper extremity )

- |             |                         |
|-------------|-------------------------|
| . Shoulder  | . Keng-kah-thâu         |
| . Elbow     | . Chhiú-khiau           |
| . Wrist     | . Chhiú-oán , Chhiú-bak |
| . Hand, Arm | . Chhiú                 |
| . Finger    | . Chhng-thâu-á          |
| . Thumb     | . Tōa-thâu-bu           |
| . Knuckle   | . Chhng-thâu-á-bak      |



## ANATOMY ( spine )

- |                  |                               |
|------------------|-------------------------------|
| . Neck           | . Ām-á-kún                    |
| . Chest          | . Heng-khám                   |
| . Back           | . Kha-chiah-phia <sup>n</sup> |
| . Low Back       | . Io-chiah-kut                |
| . Coccyx, Sacrum | . Bóe-tang-kut                |
| . Spine          | . Líong-kut                   |

## ANATOMY ( lower extremity )

- |          |                        |
|----------|------------------------|
| . Pelvis | . Kut-pôa <sup>n</sup> |
| . Thigh  | . Tōa-thúi             |
| . Knee   | . Kha-thâu-u           |
| . Tibia  | . Kha-tâng-kut         |
| . Leg    | . Kha, Kha--thúi       |
| . Ankle  | . Kha-bak              |



## ANATOMY ( lower extremity )

- |                   |                      |
|-------------------|----------------------|
| . Limbs           | . Sù-ki , Kha-Chhiú  |
| . Heel            | . Au-te <sup>n</sup> |
| . Sole            | . Kha-té             |
| . Toe             | . Kha-chhng-thâu-á   |
| . Achilles tendon | . Au-kha-kin         |

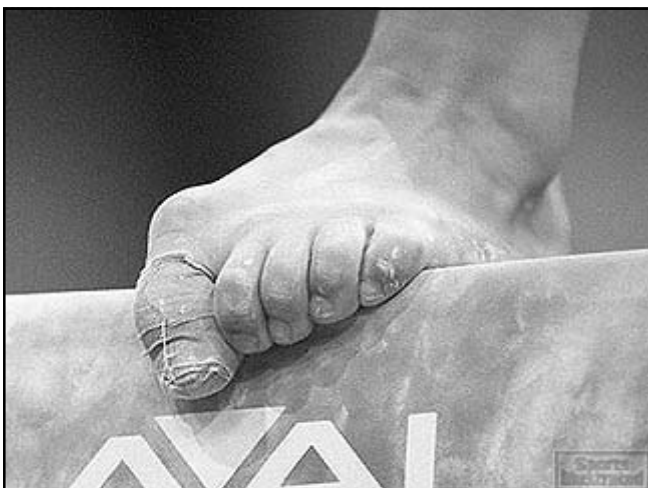


## ANATOMY ( structure )

- |           |                          |
|-----------|--------------------------|
| . Bone    | . Kut-thâu               |
| . Marrow  | . Kut-chhóe              |
| . Muscle  | . Kin                    |
| . Joint   | . Koan-chat              |
| . Hip     | . Kha-chhng-kut ( thâu ) |
| . Scapula | . Png-sí-kut             |

## DISEASE

- |                |                        |
|----------------|------------------------|
| . Arthritis    | . Koan-chat-iâm        |
| - degenerative | - Thè-hòa-sèng         |
| - rheumatoid   | - Hong-sip-sèng        |
| . Scoliosis    | . Lông-kut – oan-khiau |
| . Flat foot    | . Ah-bó-tê             |



## TRAUMA & INJURY

- |               |                             |
|---------------|-----------------------------|
| . Fracture    | . Kut-tng-khi , Kut-hâm-sau |
| . Dislocation | . Thut-lun                  |
| . Spasm       | . Kiu-kin                   |
| . Sprain      | . Oai <sup>n</sup> -tioh    |
|               | . Náu ( Láu ) -tioh         |
|               | . Choai <sup>n</sup> -tioh  |



## TRAUMA & INJURY

- |                 |                         |
|-----------------|-------------------------|
| . Auto accident | . Chhia-hō, Su-kō       |
| . Fall          | . Poah-tó, Siak-tiōh    |
| . Injury - 受傷   | . Siu-siong, Tioh-siong |
| . Sports Injury | . ũn-tōng Siong-hāi     |
| . Injury - 外傷   | . Gōa-siong             |
| . Injury - 內傷   | . Lāi-siong             |



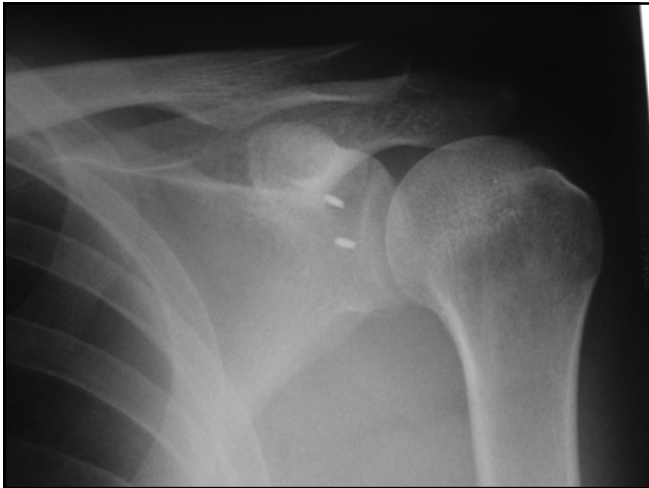
## INFLAMMATION & INFECTION

- |                |                                    |
|----------------|------------------------------------|
| . Inflammation | . Hoat-iām                         |
| . Blister      | . Phōng-phā                        |
| . Bruise       | . O -chhe <sup>n</sup> , Geng-hoeh |
| . Bursitis     | . Kut-mo h-iām                     |
| . Infection    | . Thoân-jiam, Kám-jiam             |
| . Edema        | . Chek-chúi                        |



## DESCRIPTION

- |              |  |
|--------------|--|
| . Ache, Sore | . Thia <sup>n</sup> , Sng, Sng-thia <sup>n</sup> |
| . Cripple    | . Khôe-kha, Khôe-chhiu                           |
| . Fatigue    | . Phî-lô   |
| . Limping    | . Kha-pái-pái                                    |
| . Sickness   | . Pe <sup>n</sup>                                |
| . Symptom    | . Chêng- thâu                                    |



## CLINICS

- |                   |                     |
|-------------------|---------------------|
| . Diagnosis       | . Chín-toàn         |
| . Examination     | . Kiám-cha          |
| . Physical status | . Thê-chít          |
| . Supine          | . Khùn-thán-chhio   |
| . Prone           | . Khùn-thán-phak    |
| . Decubitus       | . Khùn-thán-khi-sin |
| . X - ray         | . Chio-tiân-kong    |



## TREATMENT ( conservative )

- |                    |                        |
|--------------------|------------------------|
| . Crutch, cane     | . Koái- á              |
| . Casting          | . Không-chioh-ko       |
| . Exercise         | . Un-tông              |
| . Ice-packing      | . ù - peng , ù - liàng |
| . Warm-packing     | . ù - sio              |
| . Physical therapy | . But-lí ti-liâu       |



DYONICS 3-CHIP VIDEO SYSTEM

## TREATMENT ( surgical )

- |                    |                              |
|--------------------|------------------------------|
| . Anesthesia - epi | . Poàn-sin bā-chùi           |
| - local            | - Kiok-pô bā-chùi            |
| - general          | - Chôn-sin bā-chùi           |
| . Arthroplasty     | . Jîn-găng koan-chat         |
| . Arthroscopy      | . Koan-chat-kia <sup>n</sup> |
| . Operation        | . Chhiú-sut , Khui-to        |