

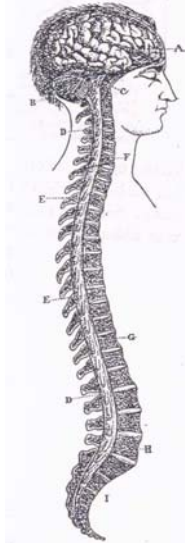
LGK khan-hou-hak  
 Sin-keng he-thong e kiat-kou kap penn-cheng  
 1 Sin-keng He-thong e kan-kai

**Lāi-gōa-kho Khàn-hō-hák Tē 9 Chiu<sup>n</sup> Sîn-keng Hē-thóng P.116-117**

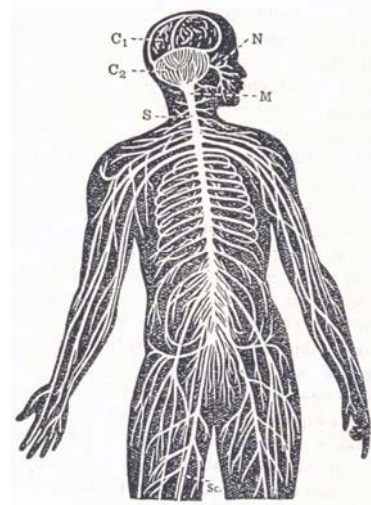
Sîn-keng sī teh chú-chái<sup>n</sup> sin-thé só-chāi chok-iōng ê ki-koan, ū hun chòe:

1. Tiong-chhu-khì-koan (中樞器官, *central nervous organ*).
2. Thôn-tō-khì (傳道器, *conducting nerves*).
3. Chiong-khì (終器, *end organs*).

I. Tiong-chhu-khì-koan chiū-sī náu-chhé (腦髓, *brain*), kap chek-chhé (脊髓, *spinal cord*), chòe sîn-keng tióng-ng ê cheng-hú; sí-siōng teh siū seng-khu ták só-chāi chin chòe ê chhi-kek (刺戟, *stimulus*), koh-chài kang bēng-lēng kàu kun-bah, hō i ōe thàn i ê ì-sù (tē 91, 93 tô).



Tē 91 tô.-Náu-chhé kap chek-chhé ê pō-ūi: A, tōa-náu; B, sió-náu; C, tióng-náu; tī C ê ē-tóe sī iân-chhé; DD, chek-chhé; EE, chek-chhé-sîn-keng; F, tē 7 kēng-chui-kut; G, tē 12 heng-chui-kut; H, tē 5 io-chui-kut; I, chiàn-kut (Blackie and Son).



Tē 93 tô.-Sîn-keng hē-thóng ê tô. tui āu-bīn khòan<sup>n</sup>: C1, tōa-náu; C2, sió-náu; N, tē 7 tui náu-sîn-keng; M, iân-chhé; S, chek-chhé, tui chia ū pun sîn-keng kàu seng-khu kap sù-chi; Sc, chō-kut-sîn-keng. (From Woodward's "Medical Nursing," Edward Arnold, publishers.)

II. Thôn-tō-khì sī sîn-keng-chhiam-î lâi chiá<sup>n</sup>-ê, (ū-si kiò-chòe náu-kun, náu-sòan<sup>n</sup>, *nerve*). Tī chiah-ê ê tióng-kan ū-ê thôn chhi-kek kàu tióng-chhu-khì, ū-ê sàng bēng-lēng kàu bé-liu, chhin-chhiū<sup>n</sup> tiān-sìn-sòan<sup>n</sup> ê khóan (tē 93 tô).

III. Chiong-khì sī chhin-chhiū<sup>n</sup> ták só-chāi siat ê tē-hng thia<sup>n</sup>, lâi kám-siū kiók-pō ê chhi-kek. Chiah-ê chhi-kek sī chhin-chhiū<sup>n</sup> peh-si<sup>n</sup> jáu-lōan á-sī hoa<sup>n</sup>-hí, á-sī ūi-tiòh sím-mih tãi-chi beh jip pín; i ê chhi-kek, seng kàu thia<sup>n</sup>, chiū-sī chiong-khì; chiah keng-kè thôn-tō-khì, chiah sàng kàu tióng-chhu-khì. Chiong-khì sī teh chòe chit hō ê lō-ēng, chhin-chhiū<sup>n</sup> ngó-koan-khì hit khóan-ê.